

# ***PRESSURE BASED LIQUID LEVEL TRANSMITTERS***



# Pressure based liquid level transmitters.

- # Measuring range up to 10 meters
- # Stainless steel construction
- # Analog output
- # Field Calibration

## Construction

Pressure based liquid level transmitters consists of stainless steel body containing transducer, Provision for process connection and weatherproof pressure diecast aluminium enclosure containing electronics and provision for cable entry.

## Operating Principle

Pressure transducers senses the difference in two pressure  $P_2$  and  $P_1$ , (pressure of liquid column) through either pressure tube\*, or drain port and sends small electrical signal to the electronics contained in enclosure, which will amplify these signals and convert the same to industry standard electrical output

(0 .....10V DC or 4.....20mA).

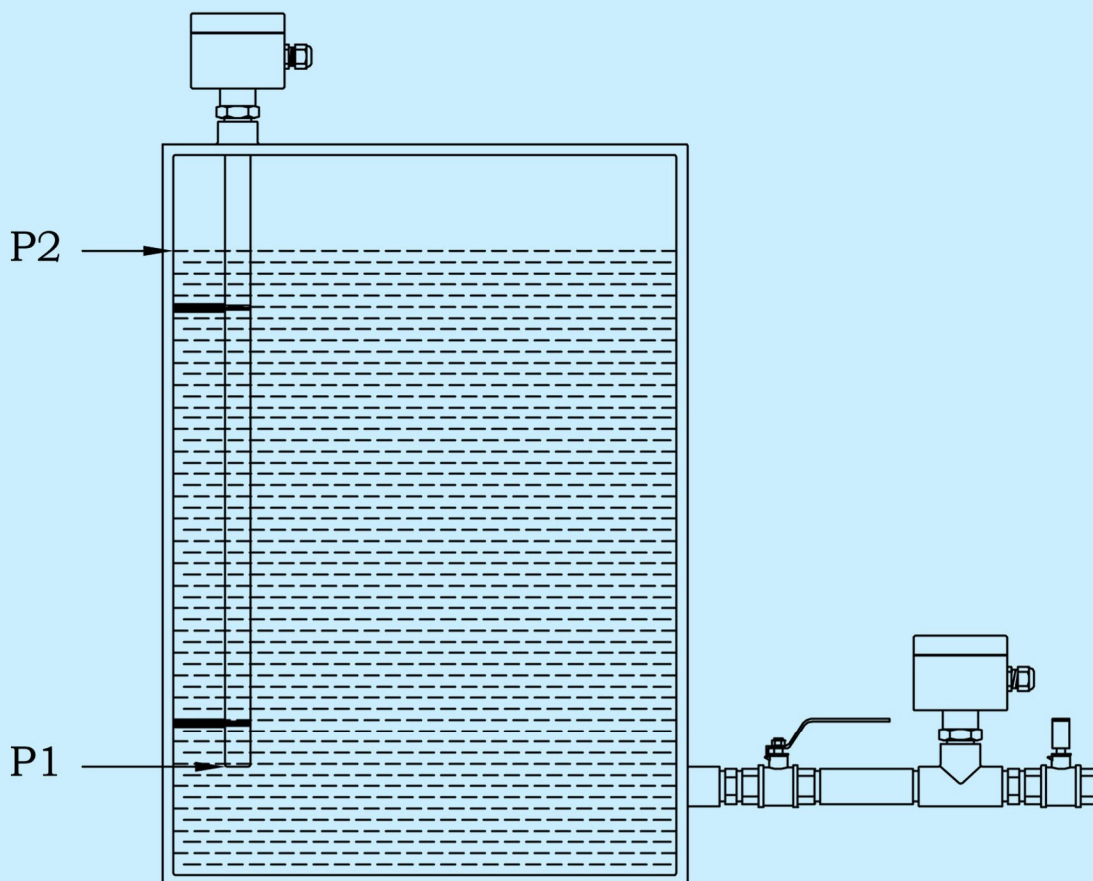
\*not part of standard supply

## Typical Applications

These transmitter are specially designed for monitoring water level in building management system, utility tanks in industries and storage water tanks of public works.

## Limitations

Threse transmitters donot work satisfactorily in corrosive liquids, consult us in case of considering these transmitters for application other than water.

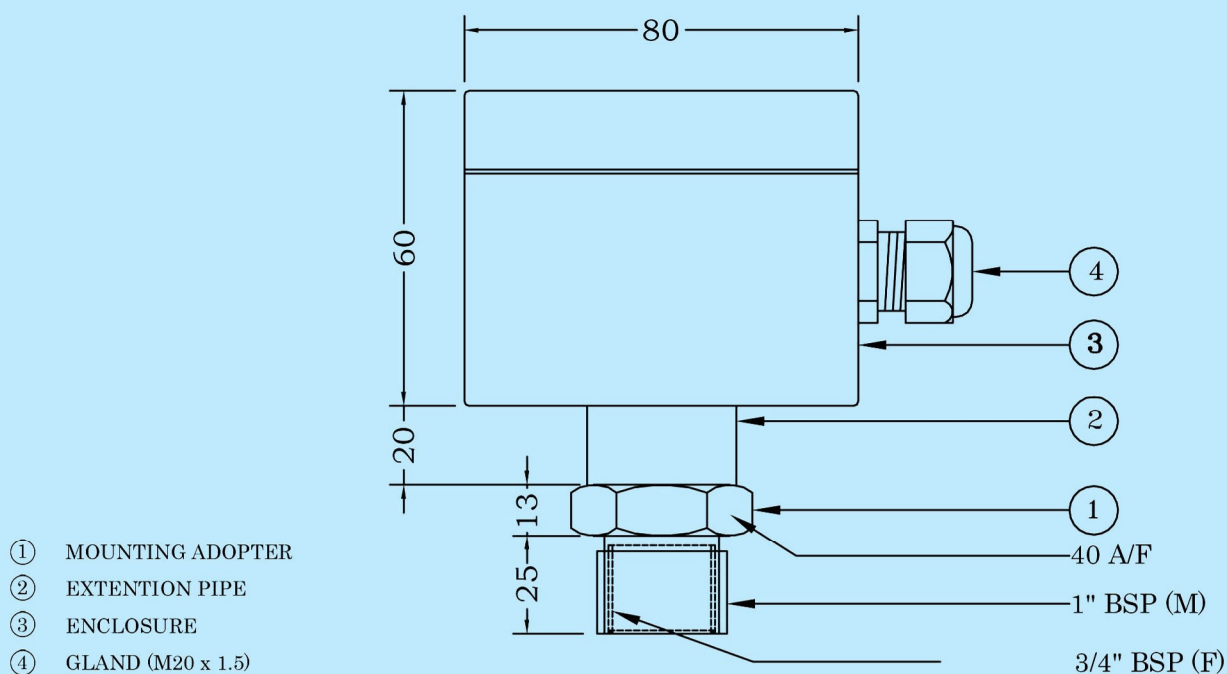




## TECHNICAL DATA

<b>Measuring range</b>	: 0 mm .....10000mm of WC
<b>Measuring error</b>	: $\pm 0.2\%$ of span
<b>Output temperature Coefficient</b>	: $0.01\% / ^\circ\text{C}$
<b>Operating temperature range</b>	: $0^\circ\text{C}$ to $+70^\circ\text{C}$
<b>Enclosure protection</b>	: weatherproof IP66 to IS:2147
<b>Terminals</b>	: 1.5mm Sq.max.
<b>Cable entry</b>	: M20 x 1.5 mm
<b>Output</b>	: 0...10 V DC      or      4.....20mA (3 wire)                      (2 wire)
<b>Process connection</b>	: 1" BSP(M) & $\frac{3}{4}$ " BSP (F)
<b>Span suppression</b>	: Max.70% of rated span
<b>Zero elevation</b>	: Max. 10% of rated span
<b>Excitation voltage</b>	: +13 ..... +26 V DC for 0.....10V DC output : +12 ..... +36 V DC for 4.....20mA output

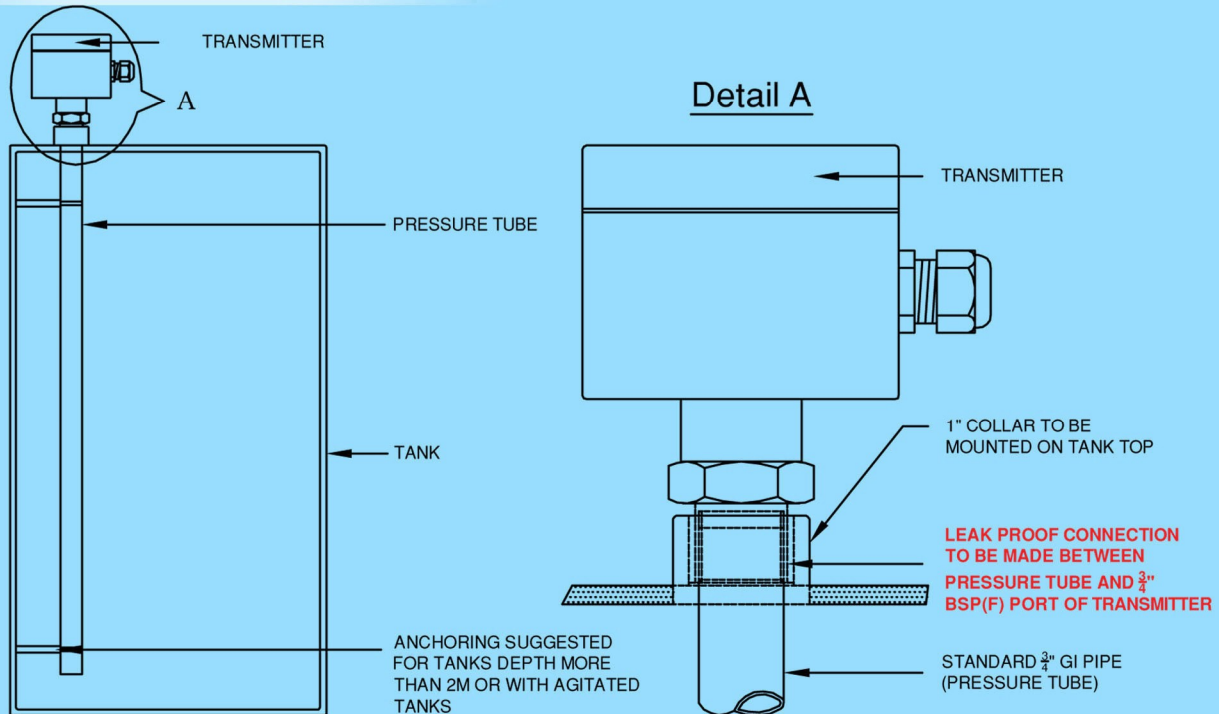
## DIMENSIONS DETAILS



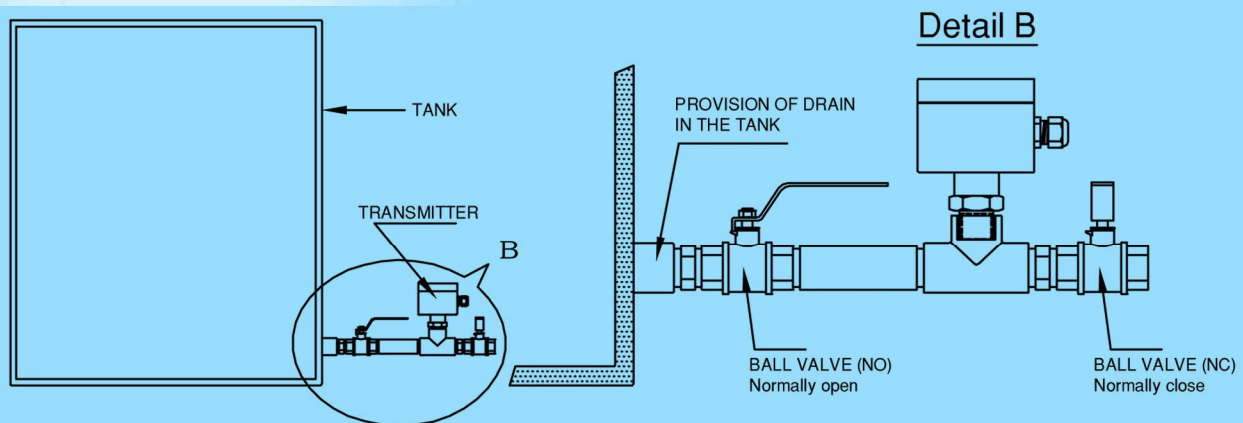
All dimensions are in mm

## TYPICAL INSTALATION SUGGESTIONS:-

### a. Mounting at Tank Top



### b. Mounting at Tank Bottom



## ORDERING INFORMATION:

PLT/ R -        / O -        /

Pressure Based Liquid  
Level Transmitter

Range in mm             Output Type

TH - 3500      VO : voltage output 0...10VDC

TE - 10000      CO : Current output 4...20mA

ex: Pressure Based Level Transmitter for range of 3.5mtrs with 0...10 VDC

PLT / R - TH / O - VO /

since continuous development is our policy, the above specification and details may change without prior notice

CT-011/PLT/01-19/R 01

## VIDYUTH ENTERPRISES

#387/41, Bikasipura Main Road, Yelachenahalli,  
(Near Delhi Public School) Bangalore - 560062.  
Ph : 080-26860013/14, 26861056 - Mob : 9886715952  
email : [info@vidyuth.co.in](mailto:info@vidyuth.co.in) - [manufacture@vidyuth.co.in](mailto:manufacture@vidyuth.co.in)  
web : [www.vidyuth.co.in](http://www.vidyuth.co.in)

