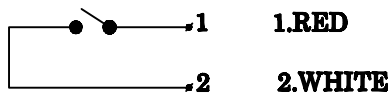


(Note: 2.5M Free Cable is build in to the Switch)

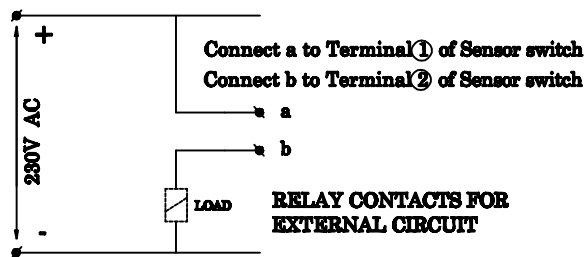
Electrical Details: -

Max.Switching Voltage: 230VAC  
 Max.Switching Current: 0.5A  
 Contact VA : 70VA

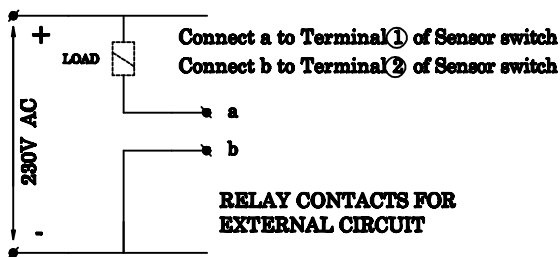
Terminal Details:



Suggested Circuit: ①

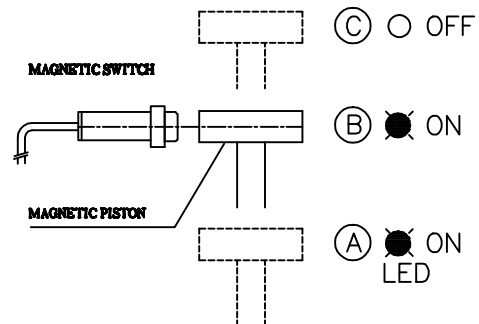


Suggested Circuit: ②



SWITCH ACTION (OLG-230L-16P )

Switch to Close on Falling Liquid Level.

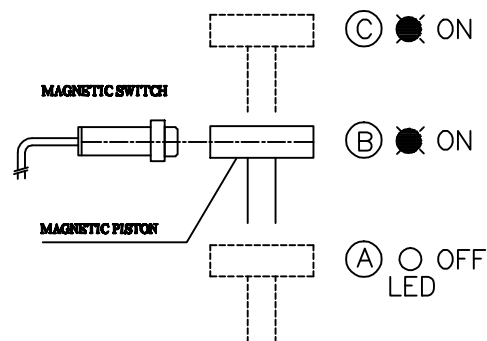


# Switch to Close on Piston Moving From C B A Direction @ B and Remains Close as Long as Piston is below B

# Switch to Open on Piston Moving From A B C Direction @ B and Remains Open as Long as Piston is above B

SWITCH ACTION (OLG-230H-16P )

Switch to Close on Raising Liquid Level.



# Switch to Close on Piston Moving From A B C Direction @ B and Remains Close as Long as Piston is above B

# Switch to Open Piston Moving From C B A Direction @ B and Remains Open as Long as Piston is below B



**VIDYUTH ENTERPRISES  
 BANGALORE.  
 PH NO:080-26860013/14**

2	Cable	2.5M	Copper/ PVC Insulated
1	Housing	1 No	ENGG.Plastic
SL.NO	Description	Qty	Material

CLIENT:

TITLE: MAGNETIC SENSOR  
 SWITCH 230AC

SCALE: NTS	DGN: KVG	06.06.07
CHD: KVG	DRN: SIVA	06.06.07
APPD:	DRG.NO. OLG 230	REV NO. 00
JOB NO.		